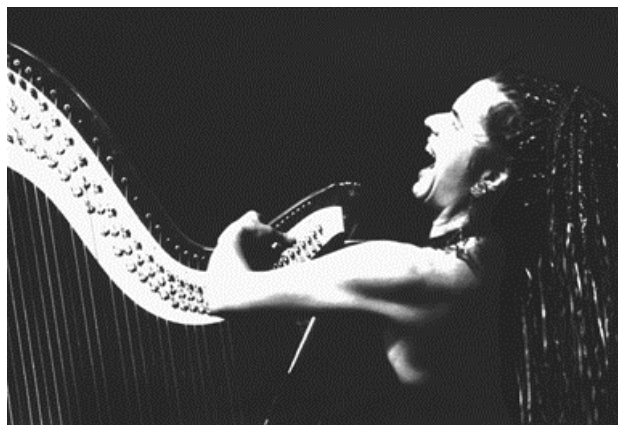


FOR IMMEDIATE RELEASE – Run through September 24, 2005

For More Information: 781-483-3556 -- publicity@HipHarp.com -- www.HipHarp.com



David Lockington - Conductor of the Grand Rapids Symphony



Deborah Henson,Conant - Boston-Area composer/performer

Boston-Area Composer/Performer partners with symphony on DVD project Boston-Area Sneak Preview • Sat, Sept. 24, 2005

ARLINGTON, MA: Composer/Performer Deborah Henson-Conant and Conductor David Lockington join with percussionist Bob Schulz and Boston University graduate students to present a Boston-Area sneak preview of Henson-Conant's upcoming symphonic DVD in "Maquette" form (*"Maquette" explained pg. 2*).

In late 2004, Henson-Conant received a private grant to collaborate with Lockington and the 70-member Grand Rapids Symphony for a live concert DVD/CD of Henson-Conant's original music for symphony and soloist. The DVD will be recorded during three orchestral concerts this November in Grand Rapids, MI.

As part of the year-long preparation for the live concert filming, they're presenting a "Maquette" or "Scale Model" of the final concerts, using a chamber ensemble of 8 musicians on Sat. Sept. 24, 2005, 2:00 PM, at the Arlington Center for the Arts. Tickets online at www.HipHarp.com.

(See pg. 2 for a description of a "Maquette" and more info on the concert filming)

--- more ---

WHO: Deborah Henson-Conant (soloist), David Lockington (conductor), Bob Schulz (percussionist) and chamber ensemble.

WHAT: Chamber ensemble concert

WHEN: Sat. Sept. 24, 2005 – 2:00 pm

WHERE: Arlington Center for the Arts
41 Foster Street, Arlington, MA 02474

HOW MUCH: \$22.50

TICKETS: Online at www.HipHarp.com

INFO: info@HipHarp.com / 781-483-3556

HI-RESOLUTION PHOTOS ONLINE:
www.HipHarp.com - go to "Publicity" page

What is a Musical "Maquette"

It's a "scale Model" concert used to test larger orchestral works

- "Maquette" is a French word used by architects worldwide to mean a "scale model" or "mockup."
- A "Maquette" is a testing ground of what's to follow, sample used to prepare the final work.
- An important feature of a "Maquette" is that it is a model small enough to remodel.

On November 11, 12 & 13, 2005 the Grand Rapids Symphony will present a series of concerts featuring Boston-Area composer/performer Deborah Henson-Conant. They will be filmed for DVD and CD release. Part of the year-long preparation for the filming includes creating musical "scale models" to help the creative team develop the material and prepare for the final performances. We call those scale model performances "Maquettes" the same way architects call their scale models "Maquettes."

What makes a Maquette different?

The final set of concerts is a three-night event in a 2400-seat performance hall with full symphony orchestra and film crew.

- In our musical "Maquette", 8 musicians represent a 70-piece orchestra. For example:
 - Instead of 24 violin players, we have 2.
 - Instead of a woodwind section of 11, we have 1 flute and 1 clarinet.
 - Instead of a brass section, we have 1 brass player – who plays several instruments.
 - Instead of a percussion section, we have 1 multi-percussionist.
- Instead of a huge, many-tiered performance hall, we use a small black-box theatre.
- Instead of a video director and a full high-definition video and audio recording crew, we have 2 or 3 hand-held mini-DV cameras and a few microphones.
- Instead of 2,400 formally dressed symphony subscribers, we'll have an audience of 125 local fans.

What's the same?

- The stories and the structure of the music are the same as in the final show.
- The length of the show is the same.
- The soloist and conductor are the same.

Why make a "Maquette"?

The "Maquette" is important because it gives the production team an opportunity to get direct feedback about the music and about technical and logistical issues. It's also a chance for the key personnel to work together on the piece prior to the final performances and filming. For fans, it's a chance to get a "Sneak Preview" of the show, to peer into the microscope.

See attached press release for Deborah Henson-Conant's "Sneak Preview" Maquette Sept. 24 at the Arlington Center for the Arts. Contact: 781-483-3556 for more information.

BIO

Deborah Henson-Conant Composer / Performer / Electric Harpist

She builds new worlds from sound and stories and is revolutionizing the way the world sees this ancient instrument with her cross-genre jazz-pop-comedy-folk-Flamenco-Celtic music.

Harpist, singer, songwriter, composer, author, cartoonist, entertainer, comedian – mix those together and you can just begin to describe Deborah Henson-Conant. Using her voice, her creativity and her one of a kind electric harp, Deborah Henson-Conant sculpts sound like others sculpt clay. Her performances blur the line between concert and Musical Theater. “Music is something different for me,” she explains, “It’s a way to tell a story, an essential part of every story.” Whether she’s filming a DVD with the Grand Rapids Symphony, tearing up the Edinburgh Fringe festival, touring with the Boston Pops, opening for Ray Charles at Tanglewood, or mesmerizing a theater filled with children at the Kennedy Center, Henson-Conant, live, on stage, is indescribable. She rocked onto the jazz charts in the late 80’s. Since then she’s established her own record label and released a dozen other albums from straight-ahead jazz to Celtic, blues, folk-pop and spoken word. She’s jammed on stage, and off, with the likes of Steven Tyler, Bobby McFerrin, Rufus Reid, Keith Lockhart, Marvin Hamlisch and Gary Larsen. She’s premiered her compositions with countless symphonies, lectured at the Paris Conservatory, and received grants from the National Endowment for the Arts, Massachusetts Artists Fellowship, and “Meet the Composer.” She’s been featured on NBC, CBS, and CNN, and starred in the PBS Special “Celtic Harpestry.” Henson-Conant has revolutionized her instrument. She’s brought vibrant passion and individuality to its sound, and in the process was herself transformed. Her work is an exploration of possibilities – moving her audience out of the ordinary and into the extraordinary.