

Atmospheric Snippet

Creative Resonance - 2023-09-01- PM Session

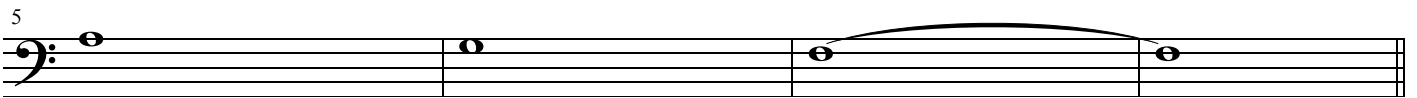
Video Replay: 37:15 - 48:05

The Snippet is firstly a Motif from the Vision Music Suite.
Think about HOW you're playing it.
Play with a single finger and let the finger come into your hand.
Or play with more than one finger and notice the connection.

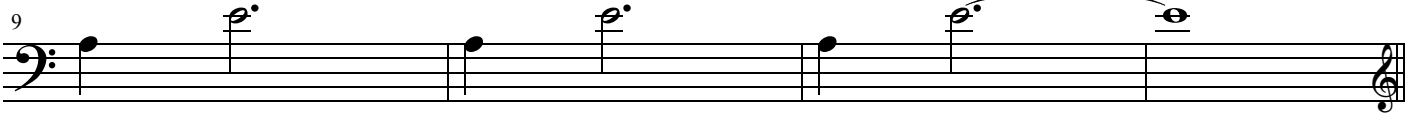
Deborah Henson Conant



The Snippet is also a Bass line, which is the engine that moves this snippet.



Add accompaniment by adding the note E.
Your LH is now Bass and Accompaniment.



You can change one note, e.g. change the low note:



Or you can move the top part up:



Playing the snippet as Bass, Accompaniment, Melody

Harp

The musical notation is for a harp in 4/4 time, consisting of four measures. The treble clef staff (top) contains the melody: a quarter rest, a quarter note G4, a quarter note A4, a half note B4, a quarter rest, a quarter note G4, a quarter note A4, a half note B4, a quarter rest, a quarter note G4, a quarter note A4, a half note B4, and a half note B4. The bass clef staff (bottom) contains the accompaniment: a quarter note G2, a quarter note A2, a half note B2, a quarter note G2, a quarter note A2, a half note B2, a quarter note G2, a quarter note A2, a half note B2, and a half note B2. The word 'Harp' is written to the left of the first measure.

Your improvisation ideas:

An empty musical staff for improvisation, consisting of four measures. The treble clef staff (top) has a small black square on the first line of each measure. The bass clef staff (bottom) has a small black square on the first line of each measure.

A second empty musical staff for improvisation, identical to the first one, consisting of four measures. The treble clef staff (top) has a small black square on the first line of each measure. The bass clef staff (bottom) has a small black square on the first line of each measure.