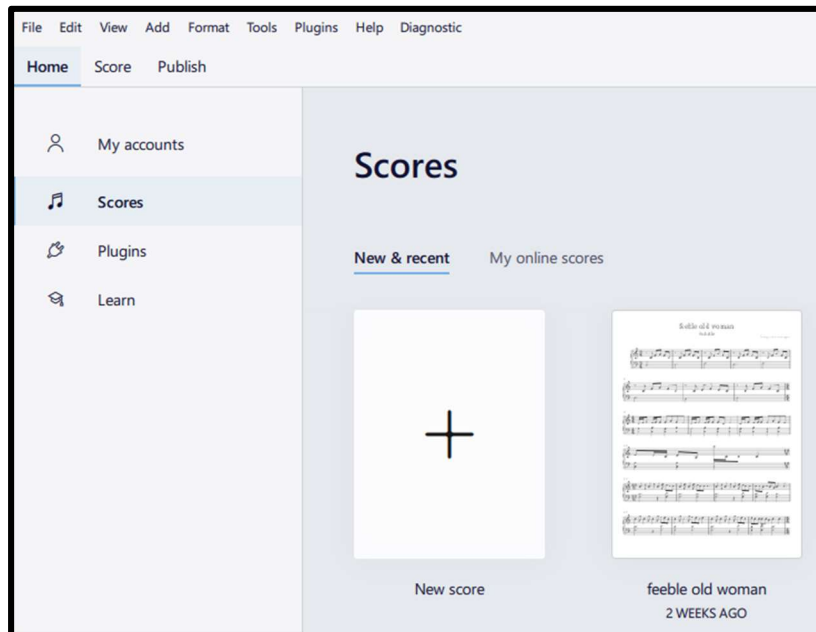


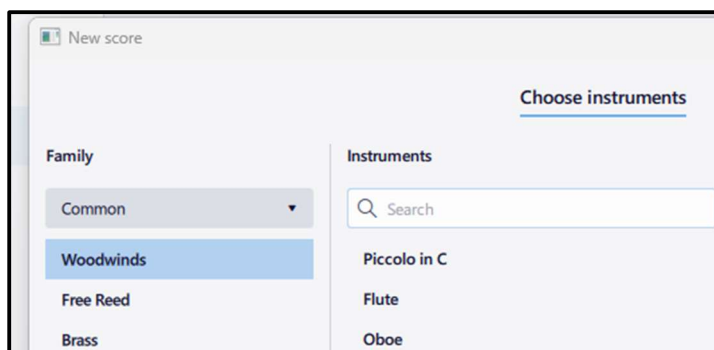
- Musescore Download <https://musescore.org/en/download>
- Musescore Support <https://musescore.org/en/support>
- Musescore Tutorials <https://musescore.org/en/tutorials>
- Musescore Shortcuts <https://musescore.org/en/handbook/4/all-keyboard-shortcuts>

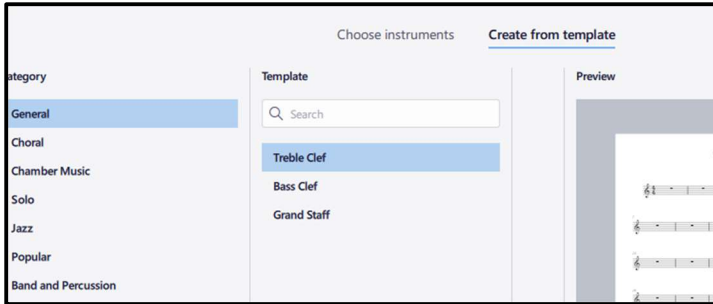


Creating a new score

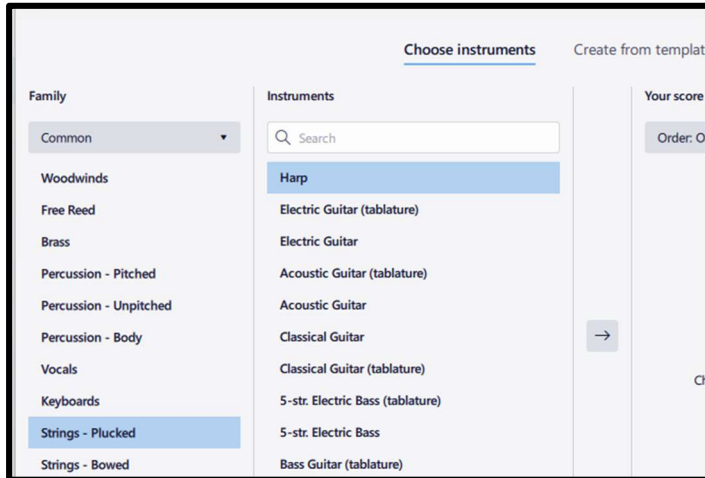
1. Select new score
2. Start from either Choose an **Instrument** or Choose a **template**

Choose Instruments

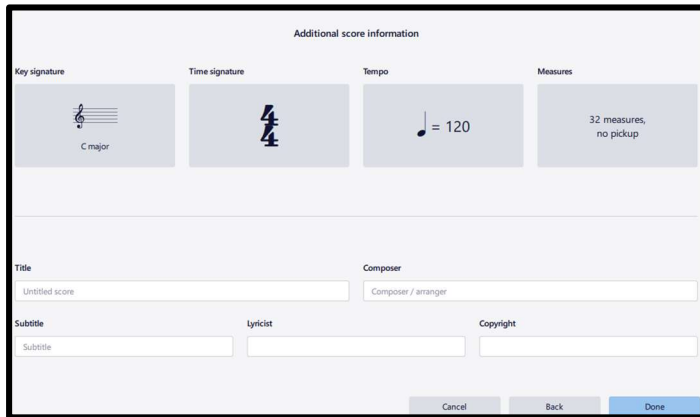




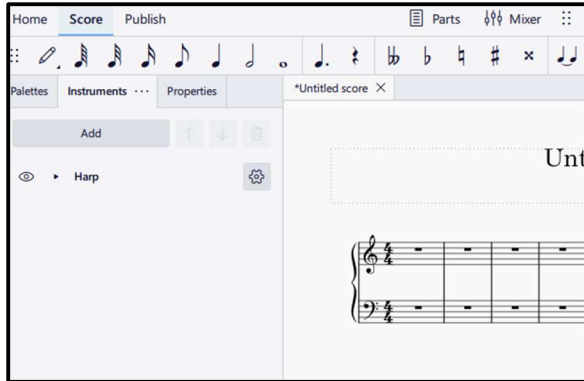
If you start with an instrument – you can select harp by **Strings Plucked** and **Harp**



And then select the **arrow** to move it over to your score then select **Next**



Choose your key signature, time signature, tempo, and initial number of measures and then fill in title and other information and select **Done**.



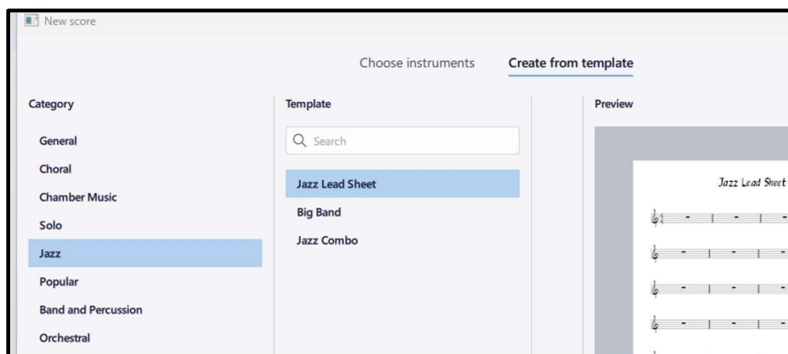
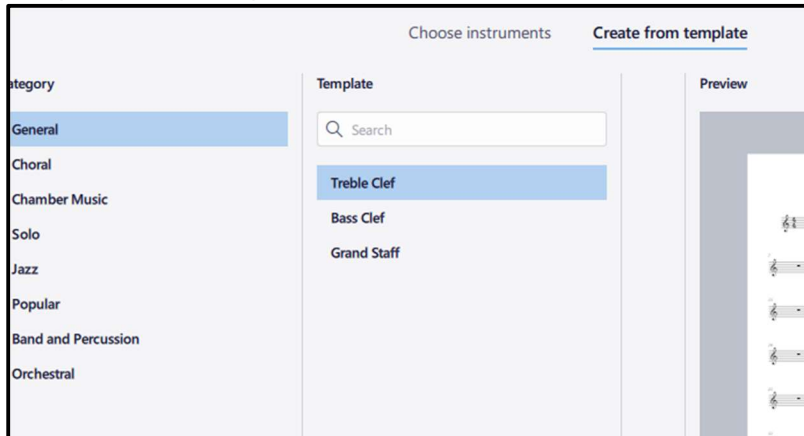
If you want to add another instrument – select the **instrument tab** and you can select **Add**. Then select the **Palettes tab**.

You may not have all the palettes that I have come up – you can add by using the search for additional palettes or markups.

Each palette has a drop down for selecting your desired music notations.

Choose from Template

Template will allow you to select various orchestral, choir, and leadsheet templates.



4. Once you have your score template you then are able to start to add your notes.



The pencil will allow you to toggle between adding notes or editing notes.

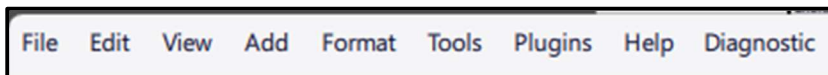
You can select a note or rest and place it on the score or you can use short cuts -short cuts by typing letter of note (example A) number duration for count for note (example 1-9, where 1 =64th and 6 = ½ note).

ACTION	WINDOWS/LINUX	MACOS
Set duration	1 - 9	1 - 9
Set duration: 64th note	1	1
Set duration: 32nd note	2	2
Set duration: 16th note	3	3
Set duration: 8th note	4	4
Set duration: quarter note	5	5
Set duration: half note	6	6
Set duration: whole note	7	7
Set duration: double whole note	8	8
Set duration: longa	9	9
Toggle duration dot	.	.

Walk through adding notes etc.

Show undo

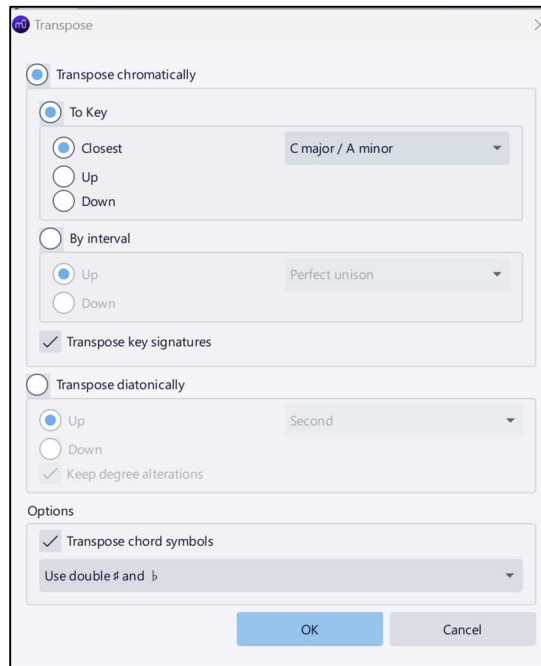
5. Menu options



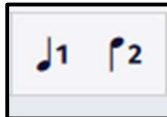
Walk through Main ones and others

- a. Walk through **file** options
 - a. Import pdf to score (see section below)
- b. Walk through edit options
- c. Walk through view options
 - a. Piano keyboard
 - b. Palettes
 - c. Instruments
 - d. properties
- d. Walk through add options
 - a. Insert measures
 - i. Also show delete notes versus delete measures
 - ii. Inserting part of a bar

- b. Insert tuplets
- c. Insert frames
- d. Insert text
 - i. Chord symbols – ctl K
 - ii. Note text – ctl T
 - iii. Verse text – ctl L
- e. Add options – insert measures
 - i. Inserting tuplets
 - ii. Inserting frames
 - iii. Texts
- e. Walk through format options
- f. Walk through tools options
 - a. Transpose



- b.
- c. Voices



- 6. Playback



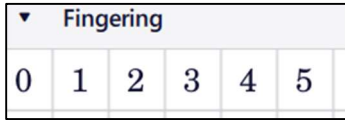
- 7. Show how to import a pdf

- 8. Show Short cuts

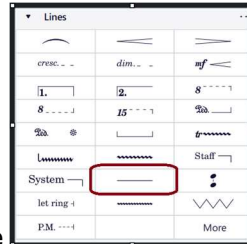
- a. Add text Ctrl -T
- b. Add lyrics Ctrl - L

c. Add chords Ctrl – K

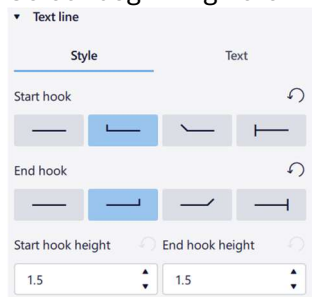
9. Show how to add fingering



10. Show how to add placing brackets

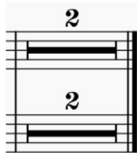


Select beginning note then select lines:line then select line properties

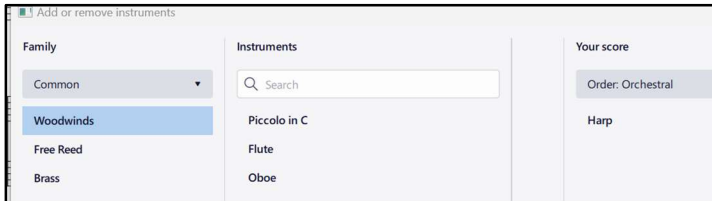


stretch line

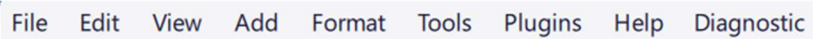
11. Show M for rest measures collapse and expand



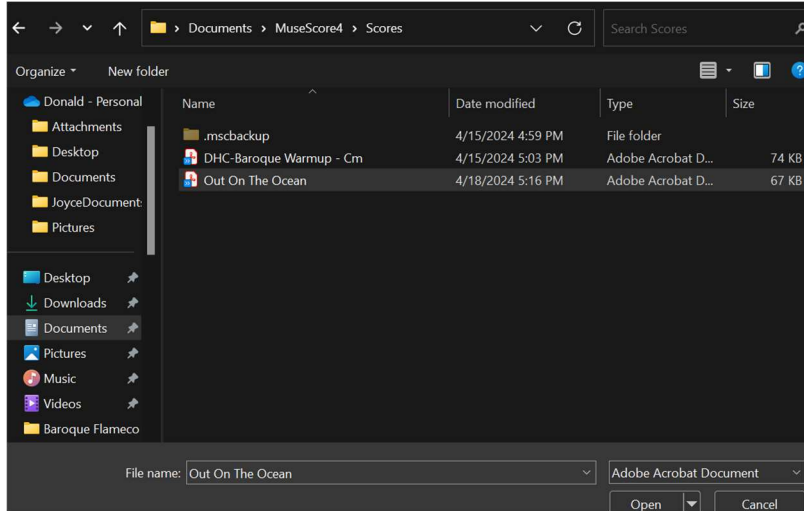
12. Show I for adding another instrument



Importing PDF



1. Select File from the menu
2. From the drop down menu select **Import PDF**
3. (You will need a musescore account (free one))
 - a. Take an example from <https://thesession.org/tunes>
 - b. Print it as a pdf



- C.
4. Select pdf for import – it will be queued



5. Wait for it to be converted (sometimes you get an email notification – the result will either be unsuccessful or Download



6. Click on **Download** – it will open in musescore



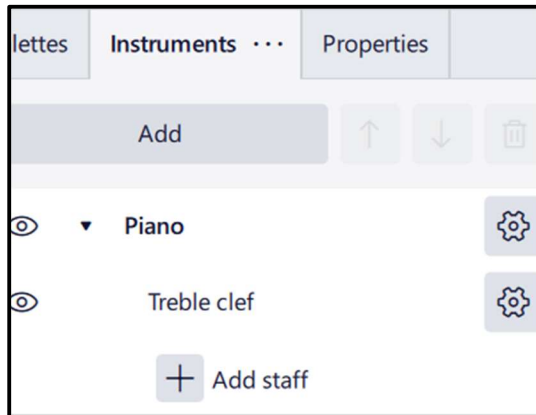
I often open up a new score to copy and paste and make changes. You can make a lead sheet and figure out your chords.

- a. Copy (control C or control X) with select note or measure and then use shift and select the last note or measure.
- b. Paste is control V.



A musical score snippet in G major, 6/8 time. The notation consists of a single staff with a treble clef and a key signature of one sharp (F#). The melody is: G4 (quarter), A4 (quarter), B4 (quarter), A4-G4 (beamed eighth notes), F#4 (quarter), E4 (quarter), D4 (quarter), C4 (quarter), B3 (quarter), A3 (quarter), G3 (quarter). Above the staff, the chords G, G, Em, and Em are indicated above the first, second, third, and fourth measures respectively.

Then go to the instruments tab and add either another instrument or another clef.



A screenshot of the Musescore software interface, specifically the 'Instruments' panel. The panel has three tabs: 'Instruments', 'Properties', and 'Properties'. The 'Instruments' tab is active. At the top, there is an 'Add' button, followed by up and down arrow buttons and a trash icon. Below this, there is a list of instruments and staves. The first item is 'Piano', which is expanded to show a sub-list containing 'Treble clef'. Both 'Piano' and 'Treble clef' have an eye icon to their left and a gear icon to their right. At the bottom of the panel, there is a '+ Add staff' button.